

# Words with 'soft c' spelt with 'ce'



twinkl

This week, we are looking at words that have a 'soft c'.  
A 'soft c' makes an /s/ sound.



This can mean that some words that may sound like they start with an 's' can actually begin with the letter 'c'.

For example:



**c**entre

If the second letter of a word that starts with an /s/ sound is an 'e', 'i' or 'y', the sound **could** in fact be made with a 'c'!



This week, we are going to concentrate on words that have a 'soft c' sound spelt with 'ce' like 'centre'.

In the next two minutes, work with a partner to see how many 'soft c' with 'ce' words that you can think of?

**Remember:** the 'soft c' sound doesn't always have to be at the beginning of the word!



**STOP**

Which 'soft c' with 'ce' words have you thought of?

Did you think of any of these words?

celebrate

centre

certificate

certain

recent

century

notice

sentence

experience

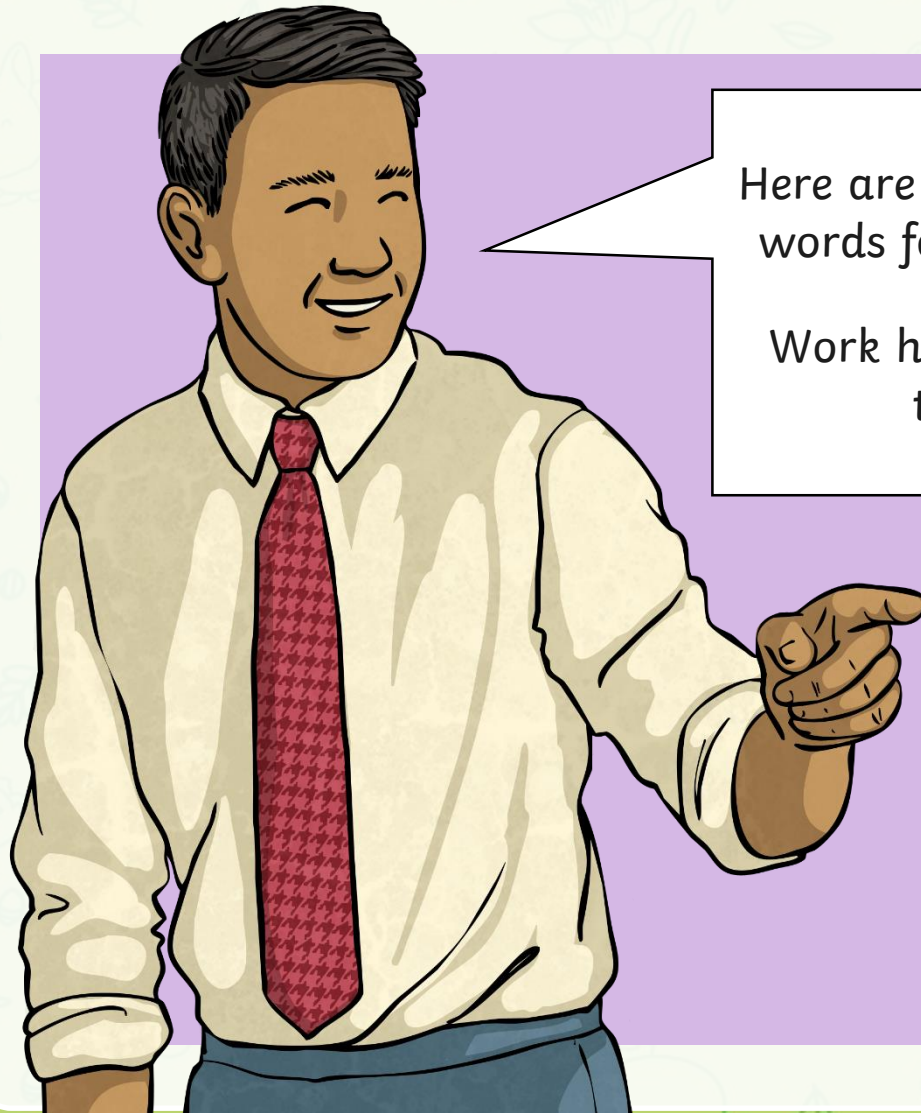
ceremony

We are going to play **Mystery Squares**.

Get your whiteboards at the ready! How many points can you collect?

<b>1</b> point	<b>20</b> points	<b>5</b> points	<b>10</b> points
<b>15</b> points	<b>7</b> points	<b>2</b> points	<b>4</b> points
<b>3</b> points	<b>9</b> points	<b>6</b> points	<b>8</b> points

**Here are your spelling words for this week.**



Here are your spelling words for this week.

Work hard to learn them.

**Week 2**

Words with 'soft c'  
spelt with 'ce'

centre  
century  
certain  
recent  
experience  
sentence  
notice  
celebrate  
ceremony  
certificate

[twinkl.co.uk](https://www.twinkl.co.uk)





twinkl