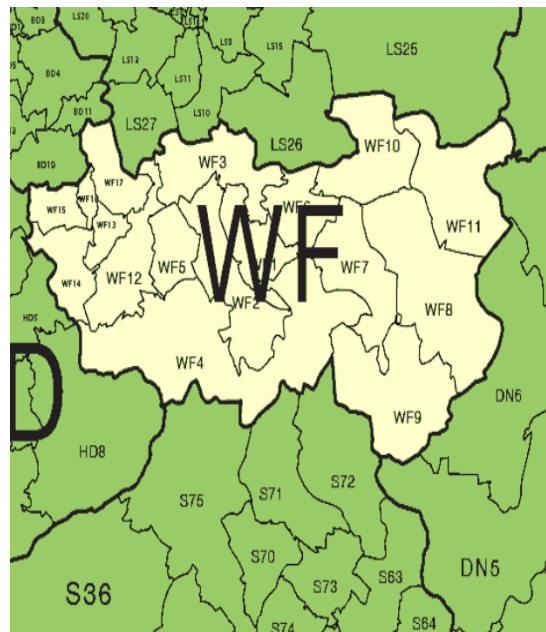


L.O. I can understand geographical similarities and differences of human and physical geography between Wakefield and Sicily.



Sicily, Italy Wakefield, England



These two places are a similar size but they are very different. We are going to be comparing Wakefield and Scicly today and looking at their features.

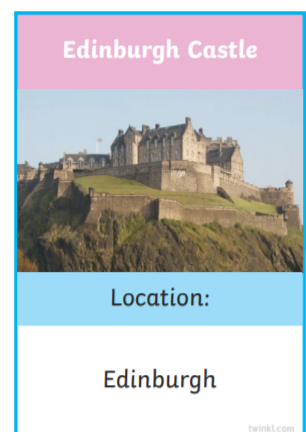
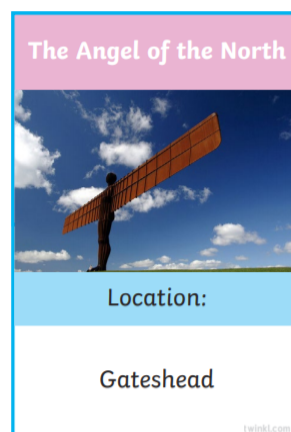
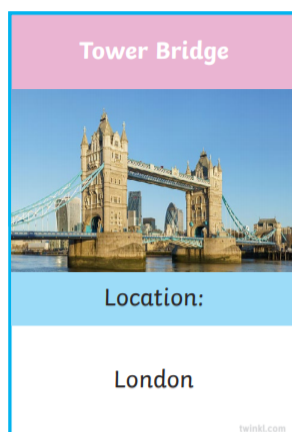
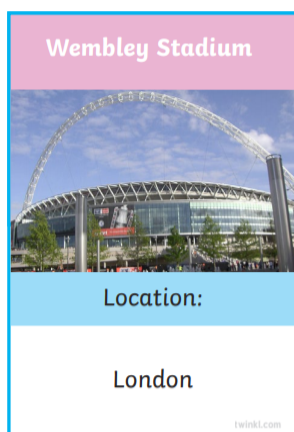
What is human geography?

What is physical geography?

Write a sentence in your book explaining physical geography and human geography.

Partner Task:

Sort the cards into human and physical features.



What physical features could we compare in
and Wakefield?

1)

2)

3)

What human features could we compare in
and Wakefield?

1)

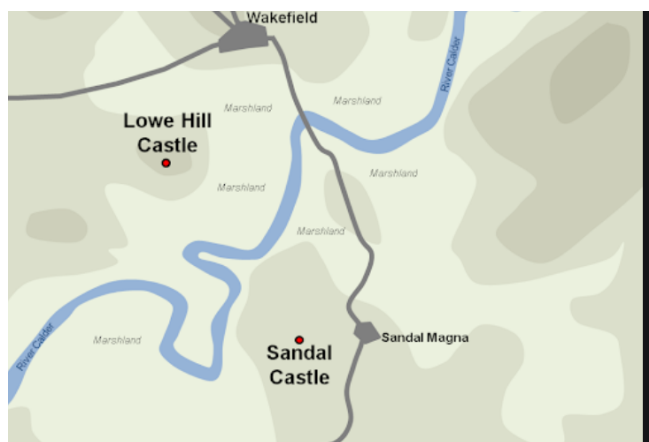
2)

3)

Physical Geography- Rivers



Sicily has a few rivers that run through it from the sea. Sicily is an island so it is completely surrounded by water.



Wakefield has one main river, the River Calder. It goes through Wakefield. Wakefield is not surrounded by water, it is surrounded by land.

Human Geography- Castles



Lombardia Castle was used as a summer home by Frederic III of Aragon. Built on top of a hill this Norman era castle was used as a fortress for protection.

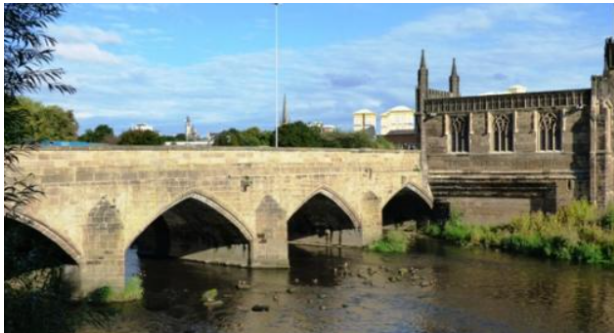


Sandal Castle is a ruined medieval castle in Sandal Magna, a suburb of the city of Wakefield in West Yorkshire, England, overlooking the River Calder.

Human Geography- Bridges



The Strait of Messina Bridge is a long-planned suspension bridge across the Strait of Messina, a narrow section of water between the eastern tip of Sicily and the southern tip of mainland Italy.



Chantry Bridge is south of the city centre on the medieval bridge over the River Calder. It is the only survivor of four chantries in Wakefield and the oldest and most ornate of the surviving bridge chapels in England.

Physical Geography- Climate

Average Temperatures, Precipitation & Daylight in Sicily

Month	Jan	Feb	Mar	Apr	May	Jun	Jul	Aug	Sep	Oct	Nov	Dec	Year
Average High Temp °C (°F)	15 (59)	15 (59)	16 (61)	18 (64)	22 (72)	25 (77)	28 (82)	30 (86)	27 (81)	23 (73)	19 (66)	16 (61)	20 (68)
Average Low Temp °C (°F)	10 (50)	10 (50)	11 (52)	13 (55)	16 (61)	20 (68)	23 (73)	24 (75)	22 (72)	18 (64)	14 (57)	11 (52)	16 (61)
Precipitation mm (inches)	72 (2.83)	65 (2.56)	60 (2.36)	44 (1.73)	26 (1.02)	12 (.47)	5 (.20)	2 (.08)	42 (1.65)	98 (3.86)	94 (3.7)	80 (3.15)	611 (24.06)
Hours of Daylight	10	11	12	13	14	15	14.5	14	12.5	11	10	9.5	Monthly Averages
Hours of Sunshine	4	4.5	6	7	9	11	12	10	9	6.5	5	4	Monthly Averages

WAKEFIELD WEATHER BY MONTH // WEATHER AVERAGES

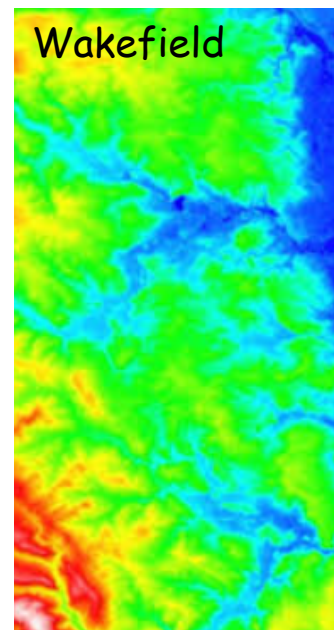
	January	February	March	April	May	June	July	August	September	October	November	December
Avg. Temperature °C (°F)	4.2 °C (39.5) °F	4.2 °C (39.6) °F	5.7 °C (42.3) °F	8.1 °C (46.6) °F	11.2 °C (52.2) °F	14.1 °C (57.3) °F	16.1 °C (61) °F	15.7 °C (60.3) °F	13.6 °C (56.6) °F	10.5 °C (50.9) °F	6.9 °C (44.4) °F	4.6 °C (40.2) °F
Min. Temperature °C (°F)	1.9 °C (35.4) °F	1.5 °C (34.7) °F	2.4 °C (36.2) °F	4.1 °C (39.3) °F	7.2 °C (45) °F	10.1 °C (50.2) °F	12.3 °C (54.1) °F	12.2 °C (54) °F	10.3 °C (50.5) °F	7.8 °C (46) °F	4.4 °C (40) °F	2.3 °C (36.2) °F
Max. Temperature °C (°F)	6.5 °C (43.6) °F	7.1 °C (44.8) °F	9.2 °C (48.5) °F	12 °C (53.6) °F	14.9 °C (58.8) °F	17.6 °C (63.7) °F	19.7 °C (67.5) °F	19.1 °C (66.4) °F	17 °C (62.6) °F	13.3 °C (56) °F	9.2 °C (48.6) °F	6.8 °C (44.2) °F
Precipitation / Rainfall	68	58	58	64	62	76	72	76	65	69	69	72

Physical Geography: Topographic Maps

Topography describes the physical features of an area of land. These features typically include natural formations such as mountains, rivers, lakes, and valleys.



The red shows high ground /mountains.



What do you notice about the difference in Sicily and Wakefield?

Physical Geography- Land



Wakefield



Sicily

What do you notice about the differences in the land?

Task:

A Carroll diagram helps us to compare the cities. You are going to compare the physical and human similarities and differences of Sicily and Wakefield.

	Physical	Human
Similarities		
Differences		

