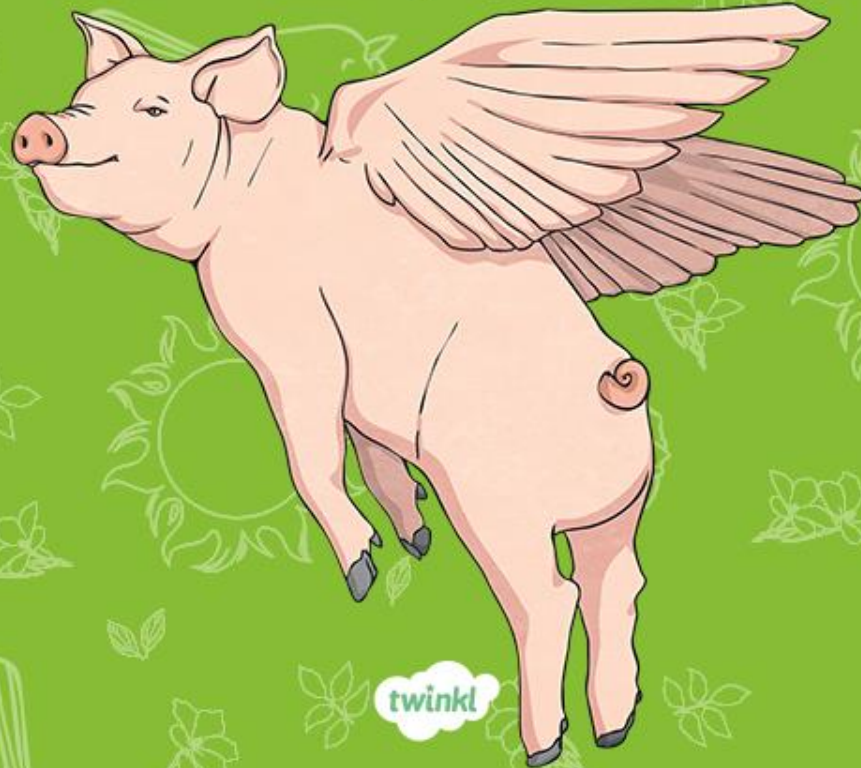


# Words with the Prefix 'non-'



twinkl

This week, we are  
looking at the prefix  
**non-** meaning '**not**'.

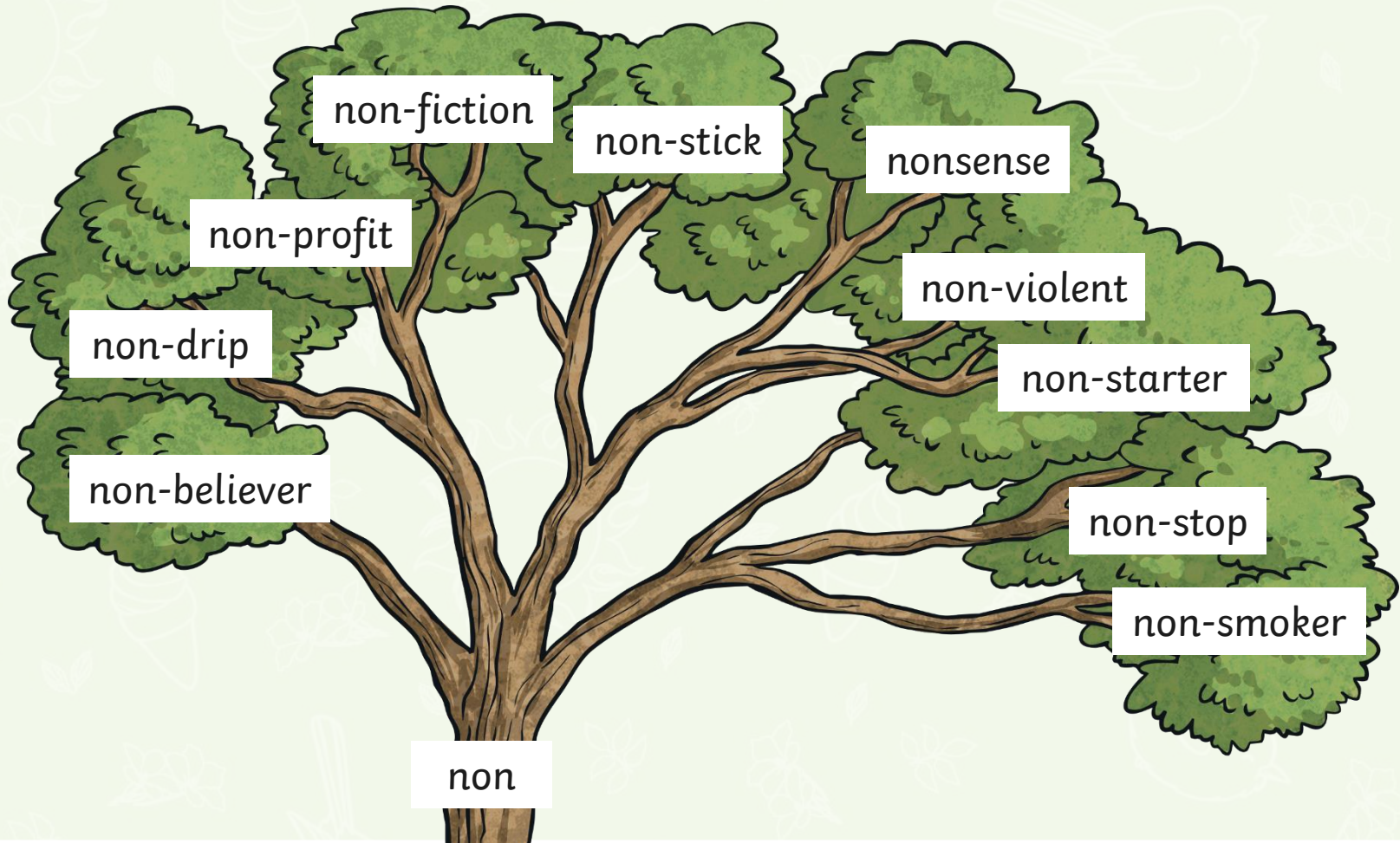
How many words can  
you think of in 5  
minutes with the  
prefix non-?



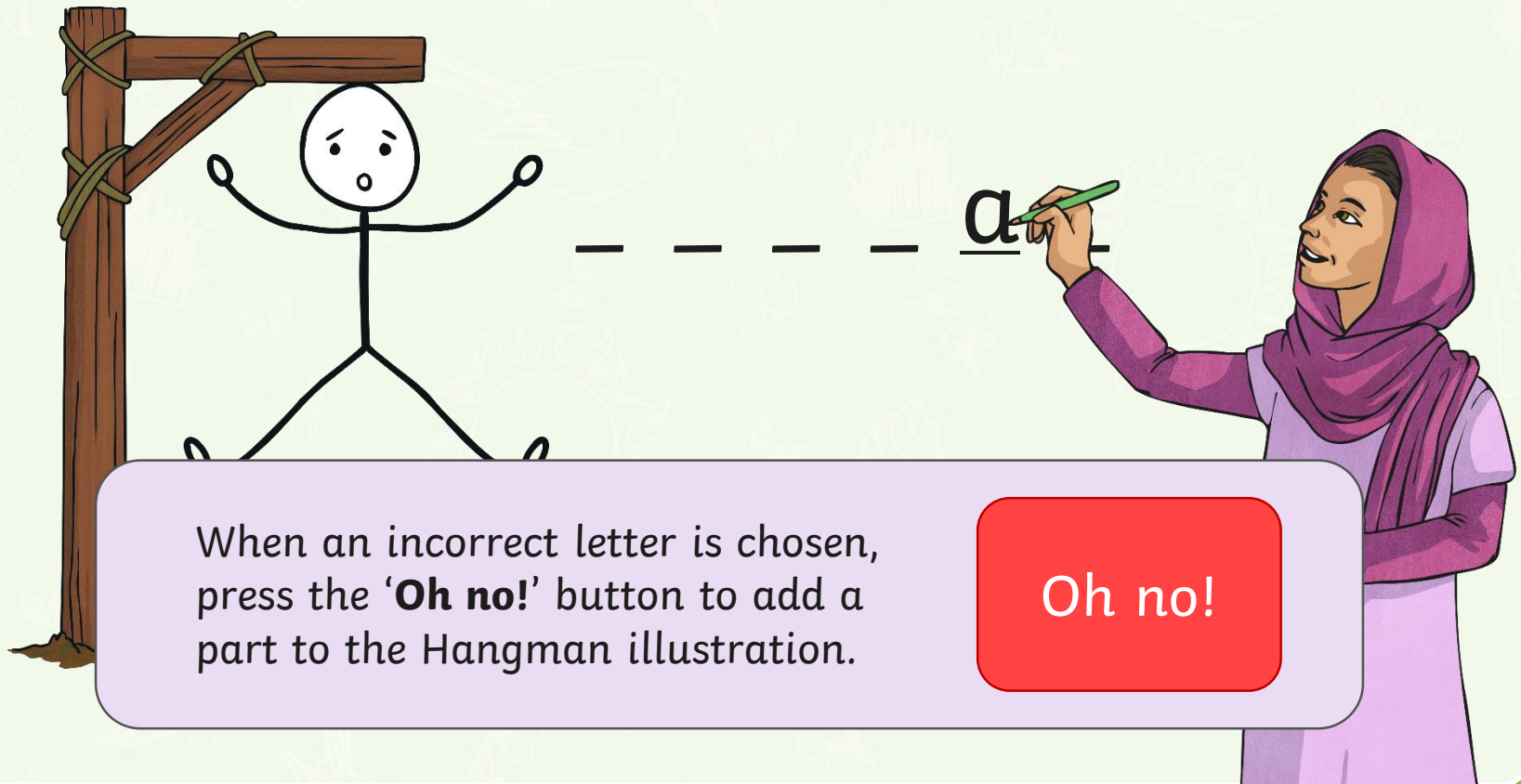
**Start**



How many of this week's words did you come up with?  
Do you know what they all mean? Check in a dictionary before we  
start the game.

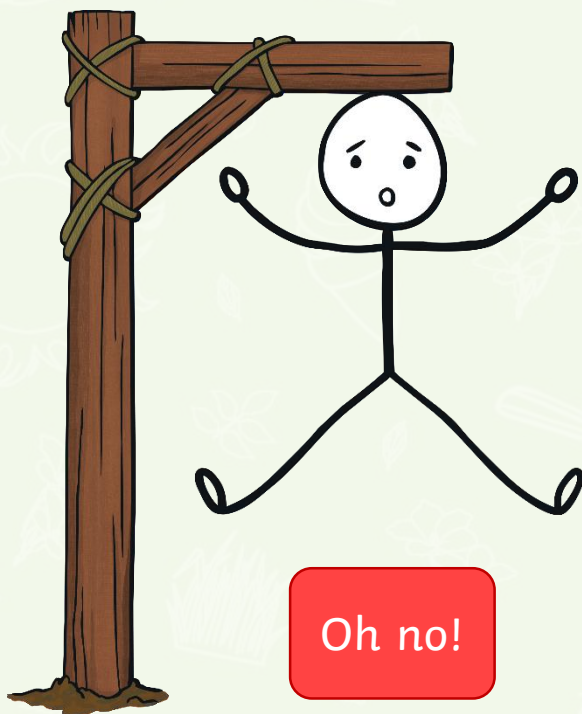


We are going to play Prefix Hangman – can you and your partner guess the letters within the non- prefix word before it's too late?



When an incorrect letter is chosen, press the '**Oh no!**' button to add a part to the Hangman illustration.

Oh no!



**Click here for a clue!**

**Oh no!**

\_\_\_\_\_

a

b

c

d

e

f

g

h

i

j

k

l

m

n

o

p

q

r

s

t

u

v

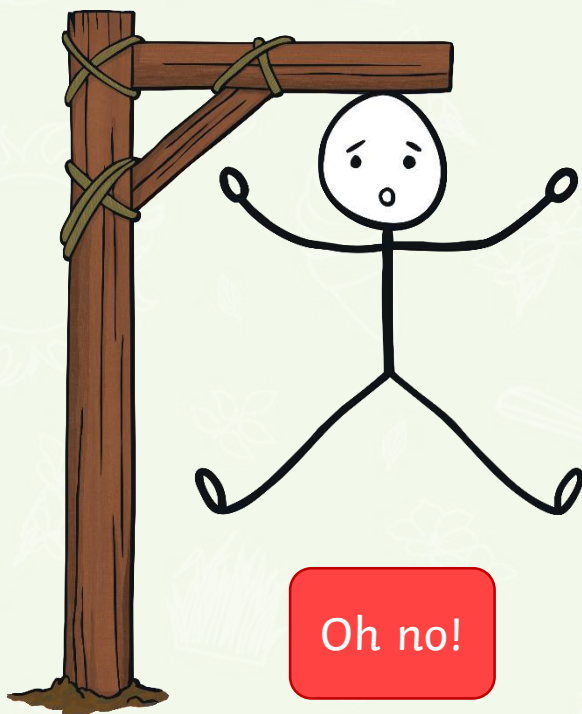
w

x

y

z



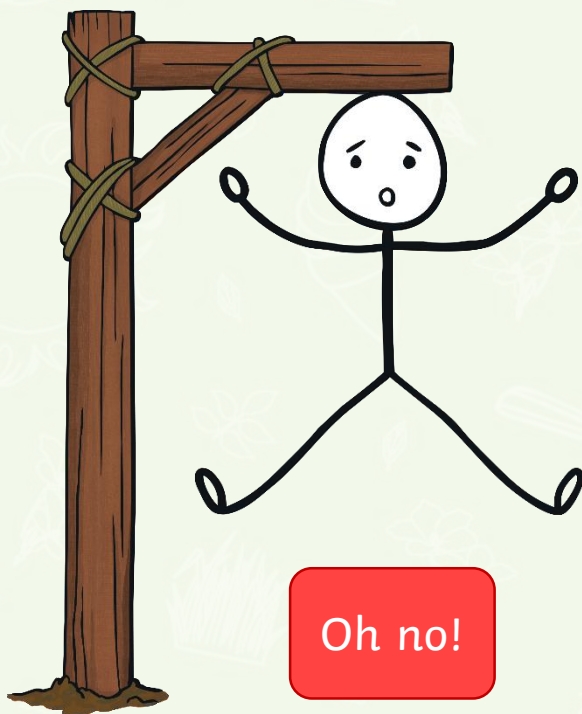


**Click here for a clue!**

**Oh no!**

-----

a	b	c	d	e	f	g	h	i
j	k	l	m	n	o	p	q	r
s	t	u	v	w	x	y	z	

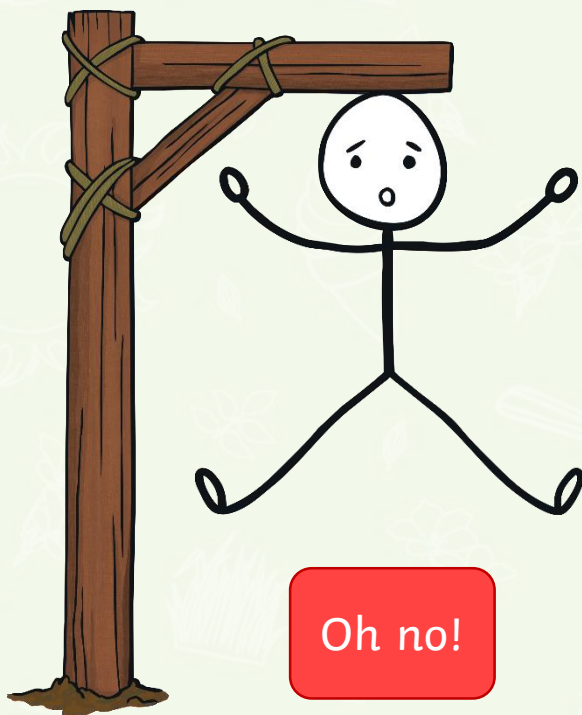


**Click here for a clue!**

**Oh no!**

\_\_\_\_\_

a	b	c	d	e	f	g	h	i
j	k	l	m	n	o	p	q	r
s	t	u	v	w	x	y	z	



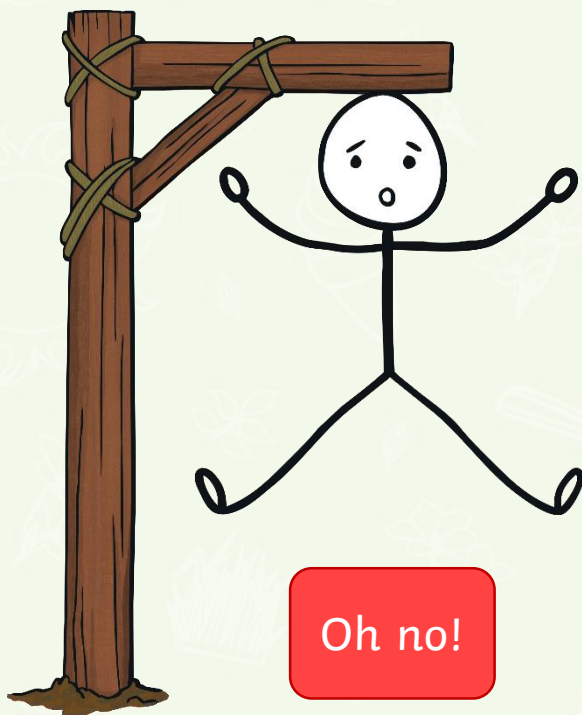
**Click here for a clue!**

**Oh no!**

-----

a	b	c	d	e	f	g	h	i
j	k	l	m	n	o	p	q	r
s	t	u	v	w	x	y	z	



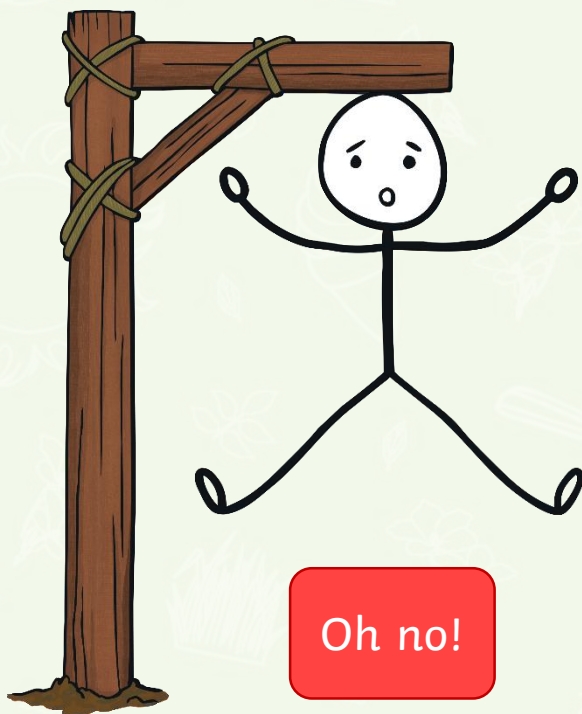


**Click here for a clue!**

**Oh no!**

\_\_\_\_\_

a	b	c	d	e	f	g	h	i
j	k	l	m	n	o	p	q	r
s	t	u	v	w	x	y	z	



**Click here for a clue!**

**Oh no!**

\_\_\_\_\_

a	b	c	d	e	f	g	h	i
j	k	l	m	n	o	p	q	r
s	t	u	v	w	x	y	z	

Here are your spelling words for this week.  
Work hard to practise the these non- prefix words.

**Week 5**

**Adding the prefix  
non-**

**(meaning 'not')**

non-stick

non-stop

non-starter

non-smoker

nonsense

non-fiction

non-drip

non-violent

non-profit

non-believer



