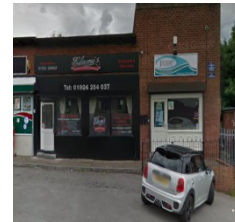


Session 4

LO: I can locate features on a map.

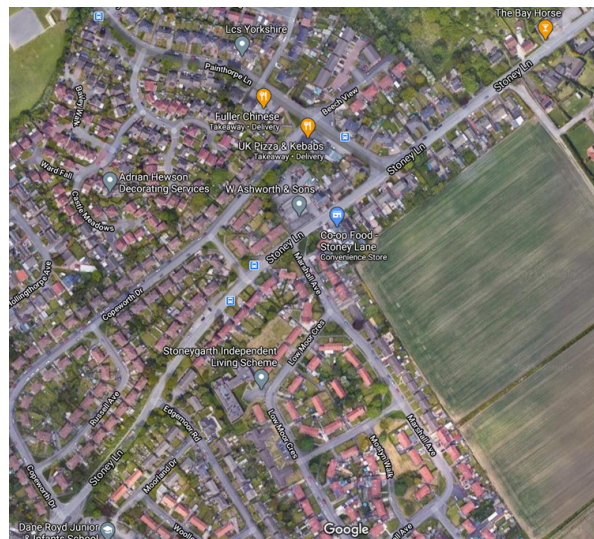
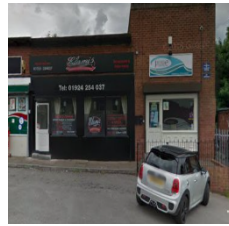


Can you remember what we saw last week on our walk?

Today we are going to place them on a map of our local area.



Draw a line to show where on the map you would find these places:



## Activity

Y1 - Stick the photo's around the map and draw lines to show where they are.

Y2 - Stick the photo's around the map and draw lines to show where they are.

Ext...Write a description of what you would find in Hall Green for someone who is visiting.

*Look at the compass.*

*What do the compass points mean?*



*Have a look at your map, find something in the  
North, South, East, West.*