

# Words Ending in -ary





All of your spelling words for this week focus on words ending in -ary.

For example:

library

Say the word aloud. Write the letters **ary** on your friend's back.



Can you hear the three distinct sounds that the letters in the letter string **ary** make?

Let's find out more about what these letters mean.

**-ary** is from Latin and means

**belonging to or connected with**

For example, look how the word 'library' has been created:

libr

+

ary

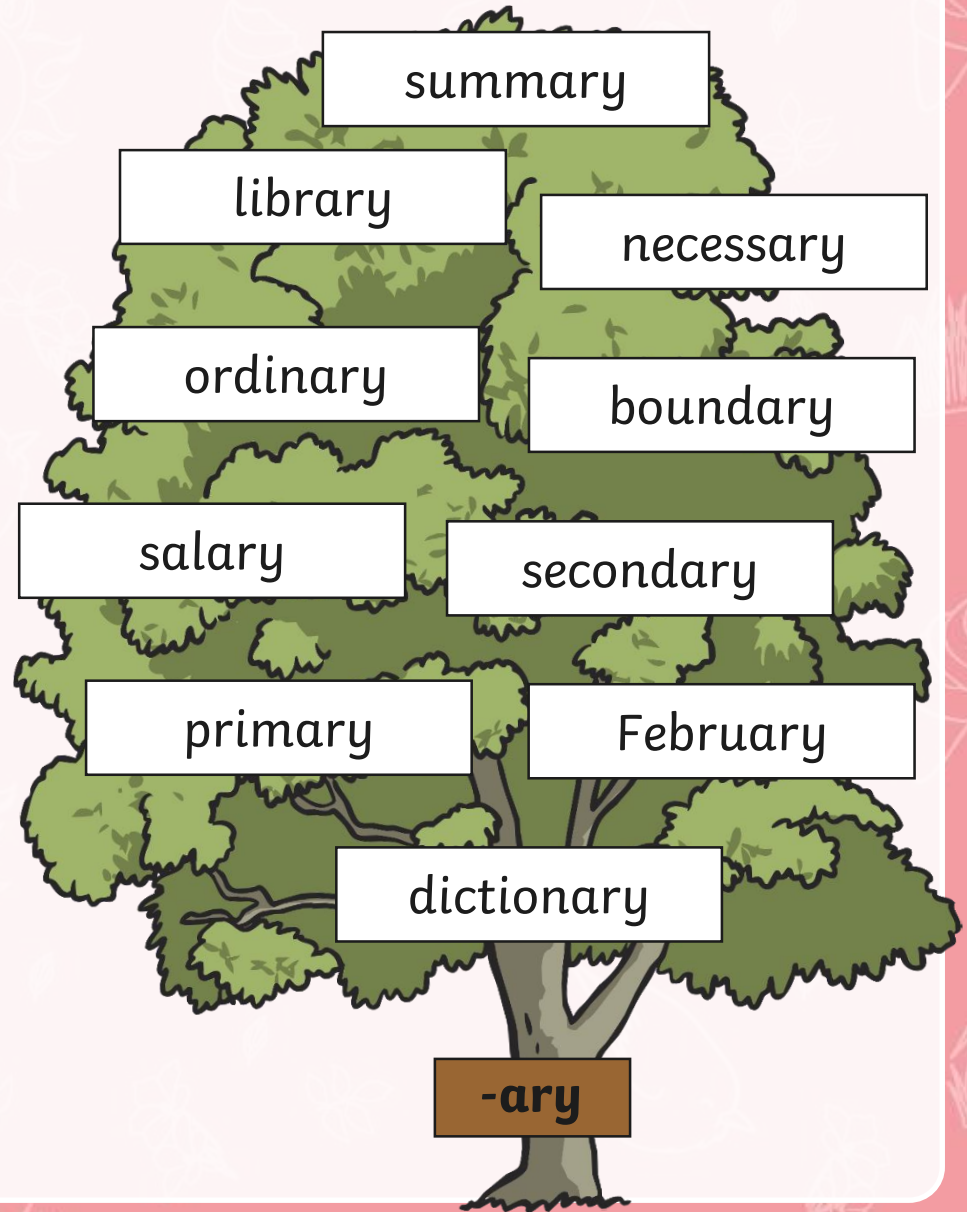
meaning book

+

connected to

= **relating to or connected to books**

Can you and your partner use a dictionary to find a definition for each of these words? Write the words and their meaning down in alphabetical order.



Select the correct ducks to spell out the word that appears when you click 'Show spelling'.

**incorrect letter**

Hide spelling

l i b r a r y



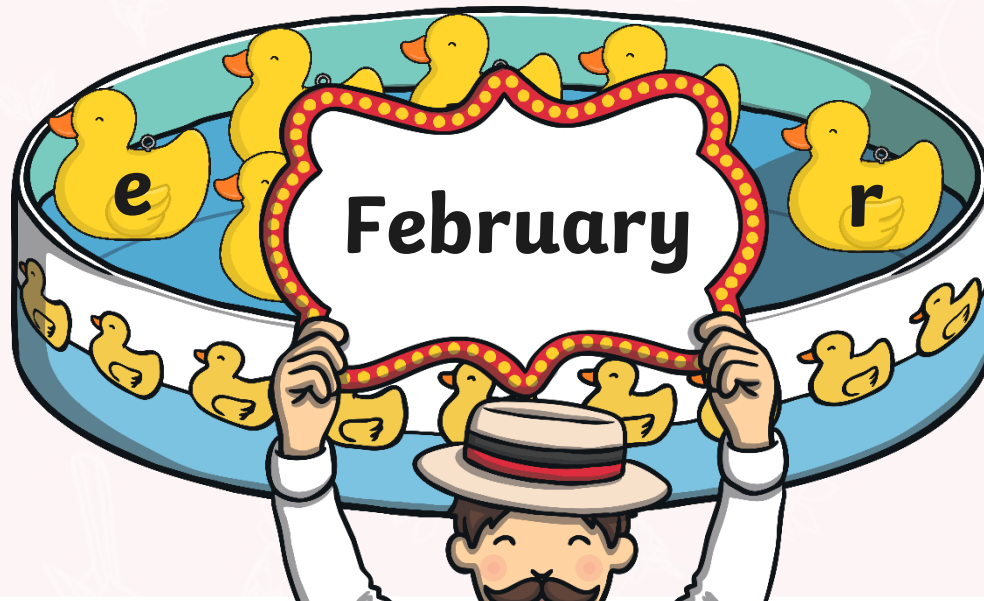


Select the correct ducks to spell out the word that appears when you click 'Show spelling'.

**incorrect letter**

Hide spelling

F e b r u a r y



Select the correct ducks to spell out the word that appears when you click 'Show spelling'.

**incorrect letter**

Hide spelling

d i c t i o n a r y

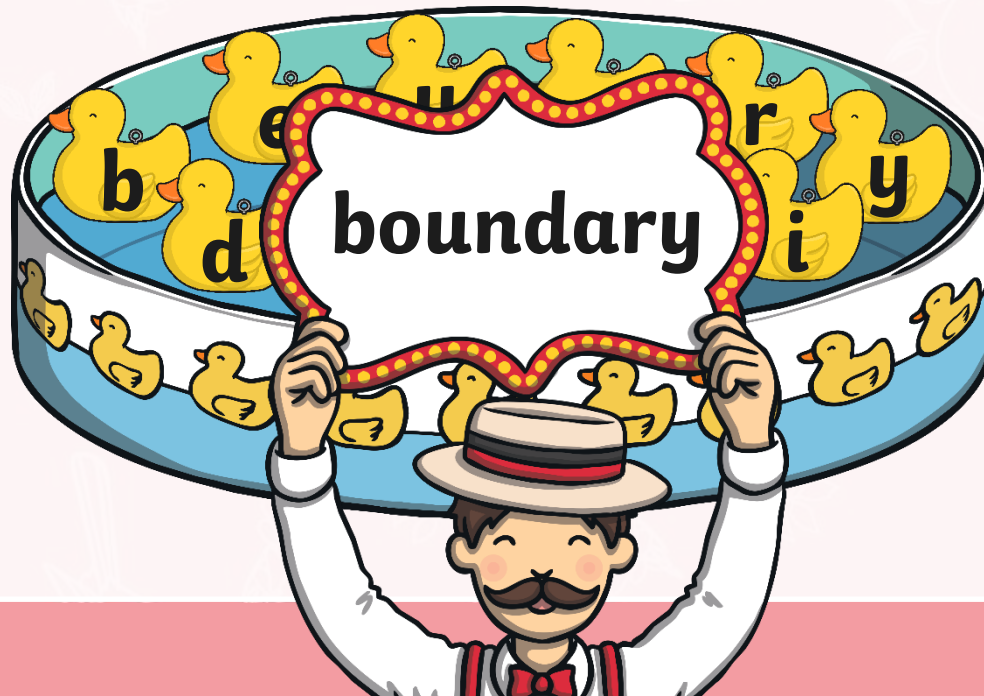


Select the correct ducks to spell out the word that appears when you click 'Show spelling'.

**incorrect letter**

Hide spelling

b o u n d a r y





Select the correct ducks to spell out the word that appears when you click 'Show spelling'.

**incorrect letter**

Hide spelling

s a l a r y



Select the correct ducks to spell out the word that appears when you click 'Show spelling'.

**incorrect letter**

Hide spelling

s u m m a r y

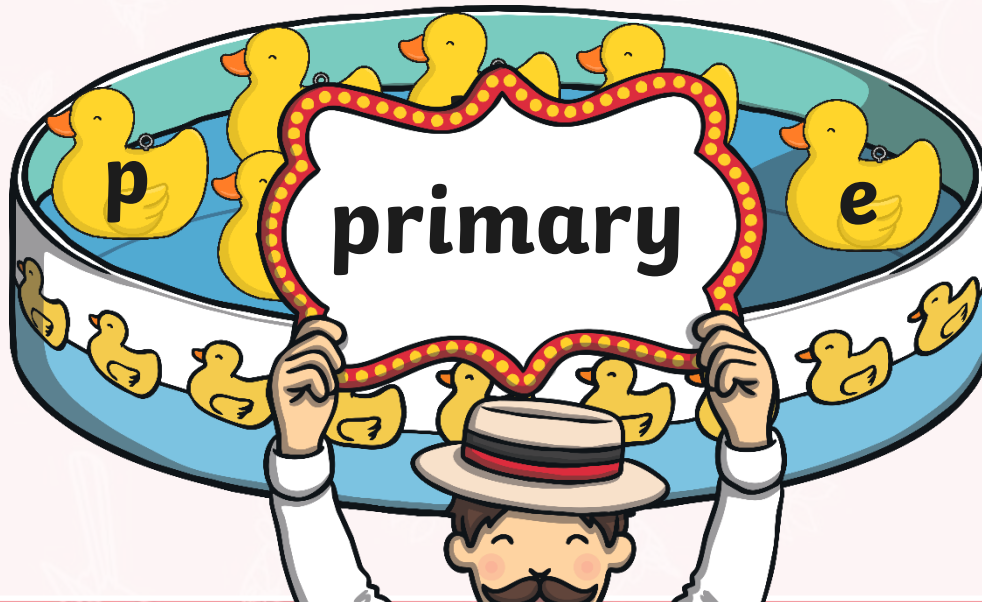


Select the correct ducks to spell out the word that appears when you click 'Show spelling'.

**incorrect letter**

Hide spelling

p r i m a r y



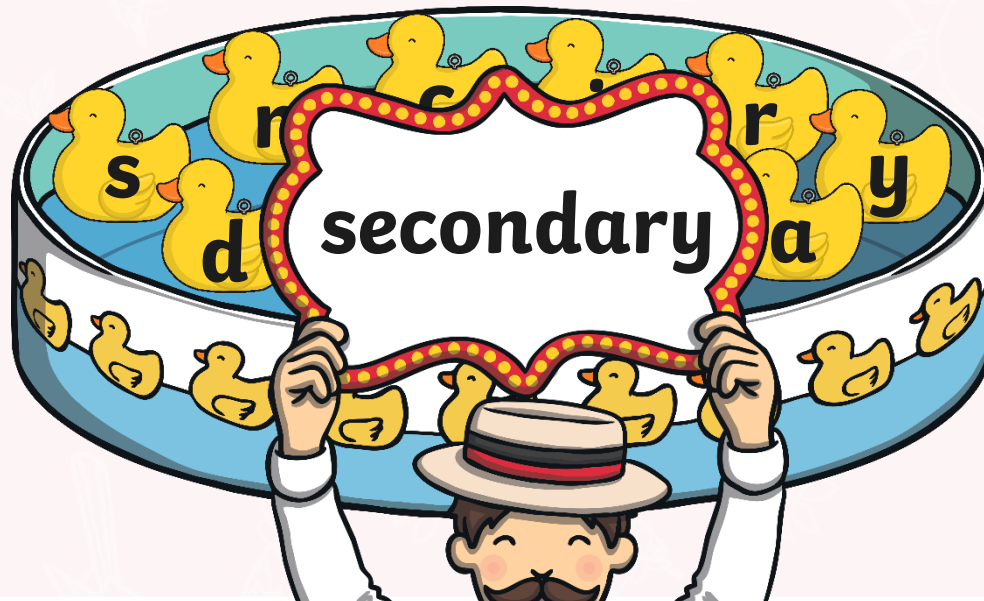


Select the correct ducks to spell out the word that appears when you click 'Show spelling'.

**incorrect letter**

Hide spelling

s e c o n d a r y

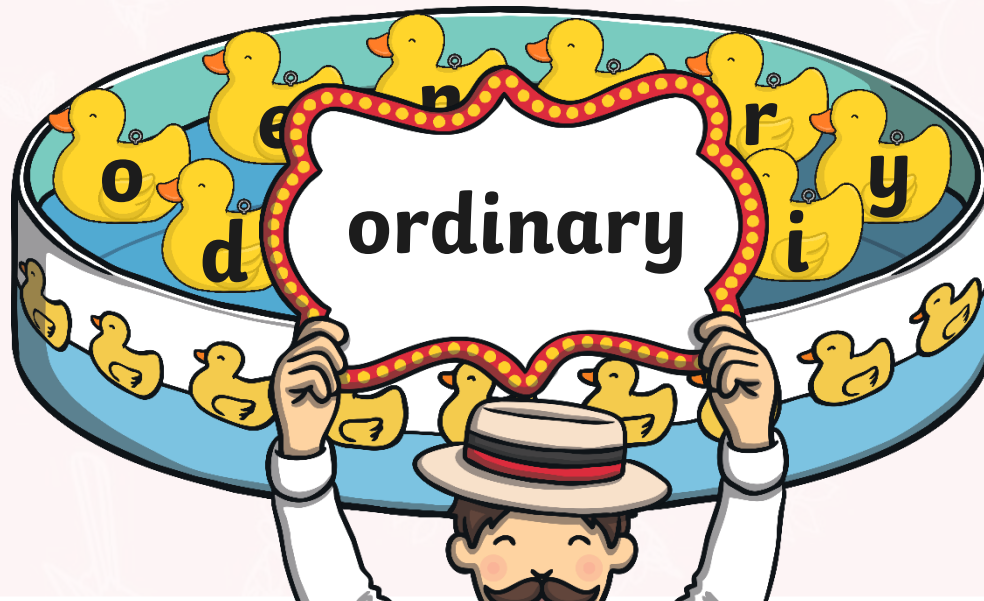


Select the correct ducks to spell out the word that appears when you click 'Show spelling'.

**incorrect letter**

Hide spelling

o r d i n a r y

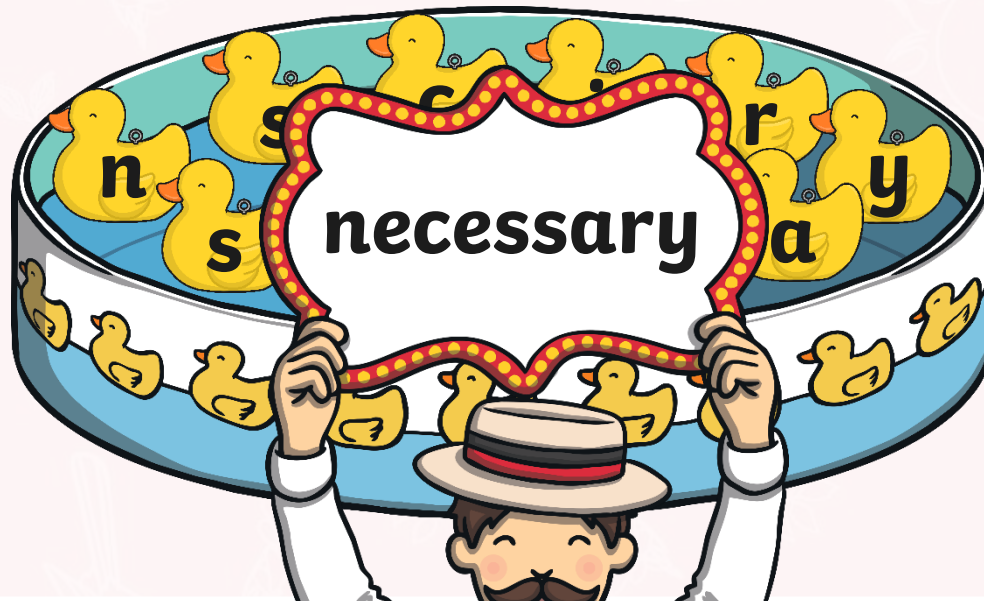


Select the correct ducks to spell out the word that appears when you click 'Show spelling'.

**incorrect letter**

Hide spelling

n e c e s s a r y





Here are your spelling words for this week.

library

February

dictionary

boundary

salary

summary

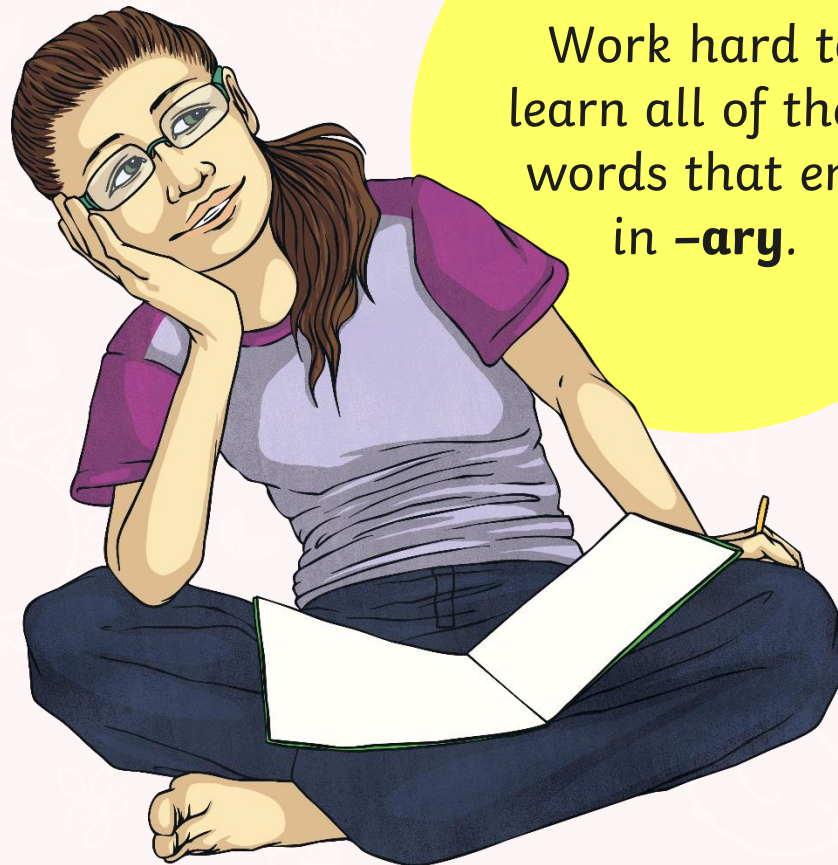
primary

secondary

ordinary

necessary

Work hard to  
learn all of these  
words that end  
in **-ary**.





twinkl